

## EXD-SF and EXD-S Technical Data Double Deck High Lift Pallet Trucks with Driver's Stand-on Platform

---

EXD-SF 20/Li-Ion

EXD-S 20/Li-Ion



EXD-SF/EXD-S Double Deck High Lift Pallet Trucks with Driver's Stand-on Platform  
Double the load – half the time

This specification sheet as per VDI Guideline 2198 only provides the technical values for the standard truck.  
Different tyres, other masts, additional equipment, etc. may produce different values.



				STILL	STILL			
Features	1.1	Manufacturer		EXD-SF 20/Li-Ion	EXD-S 20/Li-Ion			
	1.2	Manufacturer's model designation		Electro	Electro			
	1.3	Drive		Standing/pedestrian truck	Standing truck			
	1.4	Operation						
	1.5	Capacity/load	Q	kg	2000	2000		
	1.5.1	Capacity/load	as a double decker	Q <sub>i</sub> + Q <sub>m</sub>	kg	1000 + 1000	1000 + 1000	
	1.6	Load centre distance	c		600	600		
	1.8	Load distance	x		860 <sup>1</sup>	857 <sup>1</sup>		
	1.9	Wheel base	y		1632 <sup>1</sup>	1644 <sup>1</sup>		
Weight	2.1	Service weight (incl. battery)		kg	1078	1190	1500	
	2.2	Axle load, laden	drive end/load end	kg	1016/2062	1286/1904	1550/1950	
	2.3	Axle load, unladen	drive end/load end	kg	722/356	844/346	1150/350	
Wheels/chassis	3.1	Tyres			Polyurethane	Polyurethane		
	3.2	Tyre size	drive end		∅ 230 x 75	∅ 250 x 100		
	3.3	Tyre size	load end		2x ∅ 85 x 59,5	∅ 85 x 59,5		
	3.4	Support rollers size	drive end	mm	∅ 140 x 54	2x ∅ 140 x 54		
	3.5	Number of wheels (x = driven)	drive end/load end		1x2 / 4	1x2 / 4		
	3.6	Tread width	drive end/load end	b <sub>10</sub> /b <sub>11</sub>	mm	495/380	470/380	
Basic dimensions	4.2	Height of mast when lowered		h <sub>1</sub>	mm	see mast table	see mast table	
	4.3	Free lift		h <sub>2</sub>	mm	see mast table	see mast table	
	4.4	Lift		h <sub>3</sub>	mm	see mast table	see mast table	
	4.5	Height of mast when raised		h <sub>4</sub>	mm	see mast table	see mast table	
	4.6	Initial lift		h <sub>5</sub>	mm	130	130	
	4.9	Height of tiller in the driving position		min./max.	h <sub>14</sub>	mm	1120/1370	1245
	4.10	Height of wheel arms		h <sub>8</sub>	mm	85	85	
	4.15	Height when lowered		h <sub>13</sub>	mm	91	91	
	4.19	Total length		l <sub>1</sub>	mm	2086/2500	2162/2576	2568/2639 <sup>2</sup>
	4.20	Length including fork backs		l <sub>2</sub>	mm	936/1350	1012/1426	1414/1485 <sup>2</sup>
	4.21	Total width		b <sub>1</sub>	mm	720	720	
	4.22	Fork dimensions		s/e/l	mm	52/180/1150	52/180/1150	
	4.24	Fork carriage width		b <sub>3</sub>	mm	710	711	
	4.25	Overall fork width		b <sub>5</sub>	mm	560	560	
	Performance data	5.1	Driving speed	laden/unladen	km/h	7.5/9.0	8/11	
5.2		Lifting speed (initial lift)	laden/unladen	m/s	0.05/0.06	0.065/0.072		
5.2.1		Lifting speed (main lift)	laden/unladen	m/s	0.16/0.31	0.24/0.28		
5.3		Lowering speed (initial lift)	laden/unladen	m/s	0.06/0.06	0.081/0.081		
5.3.1		Lowering speed (main lift)	laden/unladen	m/s	0.30/0.25	0.24/0.24		
5.9		Acceleration speed (over 10 m)	laden/unladen	s	7.2/5.85	7/5		
5.10		Service brake			Electromagnetic	Electromagnetic		
Electric motor		6.1	Drive motor, rating S2 60 min.		kW	2.3	3.0	
		6.2	Lift motor, rating at S3 15%		kW	2.2	2.2	
		6.3	Battery in accordance with DIN 43531/35/36 A, B, C			2PzS	3PzS	Nein
	6.4	Battery voltage/rated capacity K <sub>s</sub>		V/Ah	24/250 Li-Ion: 24/82	24/375	24/465 Li-Ion: 24/205	
	6.5	Battery weight ±5% (depends on manufacturer)		kg	212 Li-Ion: 51-71	288	405 Li-Ion: 110	
	6.6	Energy consumption according to VDI cycle		kWh/h	1.07	<1.2		
Misc.	8.1	Transmission control			AC control	AC control		
	8.4	Sound level at driver's ear		dB(A)	66	<70		

<sup>1</sup> Initial lift lowered: +110 mm EXD-SF 20/Li-Ion and EXD-S 20/Li-Ion

<sup>2</sup> Open at rear/open at side

<sup>3</sup> As per FEM 4.005-2013 for pallet trucks; process as per VDI 2198-2012 = +184 mm with initial lift raised; +230 mm

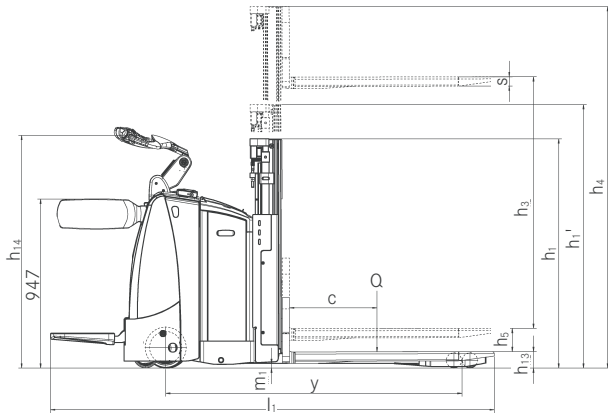
<sup>4</sup> Platform lowered

Mast Tables

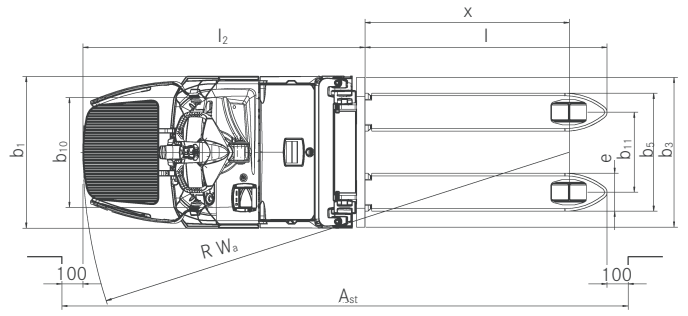
				Telescopic mast			HiLo
EXD-SF 20			EXD-SF 20				
	Height	h <sub>1</sub>	mm	1275	1525	1725	1975
	Overall height with used free lift (h <sub>3</sub> = 150 mm)	h <sub>1</sub> '	mm	1350	1600	1800	-
	Free lift	h <sub>2</sub>	mm	150	150	150	1462
	Lift	h <sub>3</sub>	mm	1580	2024	2424	2924
Height, mast raised	h <sub>4</sub>	mm	2067	2537	2937	3437	

				Telescopic mast			HiLo
EXD-S 20			EXD-S 20				
	Height	h <sub>1</sub>	mm	1275			
	Overall height with used free lift (h <sub>3</sub> = 150 mm)	h <sub>1</sub> '	mm	1350			
	Free lift	h <sub>2</sub>	mm	150			
	Lift	h <sub>3</sub>	mm	1580			
Height, mast raised	h <sub>4</sub>	mm	2067				

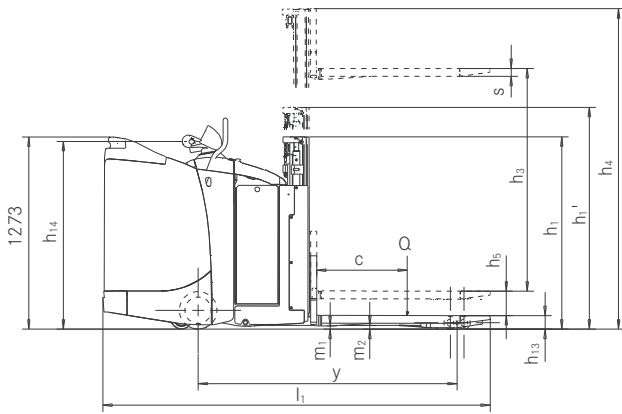
EXD-SF/EXD-S Double Deck High Lift Pallet Trucks with Driver's Stand-on Platform  
 Technical Drawings



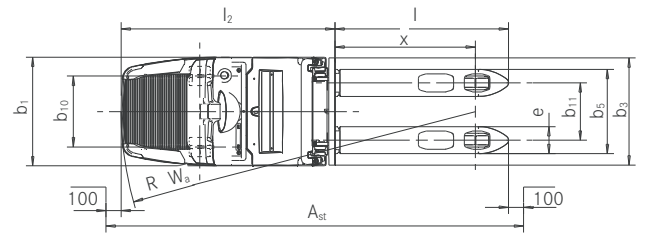
EXD-SF side view



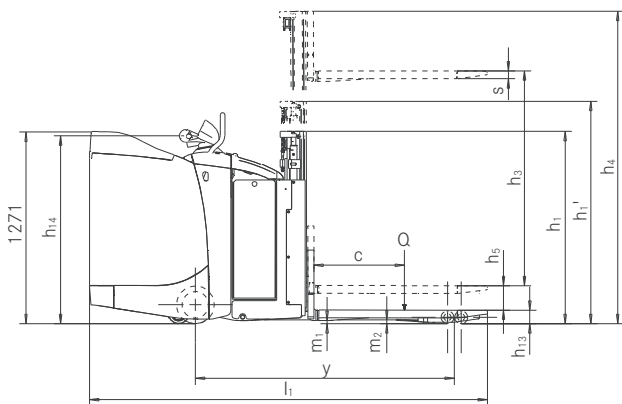
EXD-SF top view



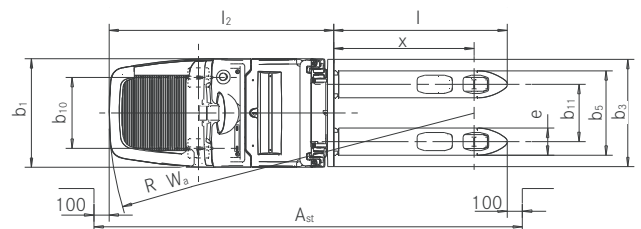
EXD-S rear entry, side view



EXD-S rear entry, top view



EXD-S side entry, side view



EXD-S side entry, top view

## EXD-SF Double Deck High Lift Pallet Truck with Driver's Stand-on Platform

### Detailed Photos



High turnover of goods thanks to the transport of two non-stackable pallets of up to 2000 kg



Fatigue-free operation and reduced strain on the operator thanks to the air-cushioned stand-on platform



Always at full power with STILL lithium-ion battery technology



Safe on the road, including in pedestrian mode, with the unique STILL combination tiller for optimum safety distance to the truck

EXD-S Double Deck High Lift Pallet Truck with Driver's Stand-on Platform  
Detailed Photos



High turnaround rate and optimal load visibility due to free view mast



Perfect in confined spaces and for loading and unloading of lorries: short and narrow design

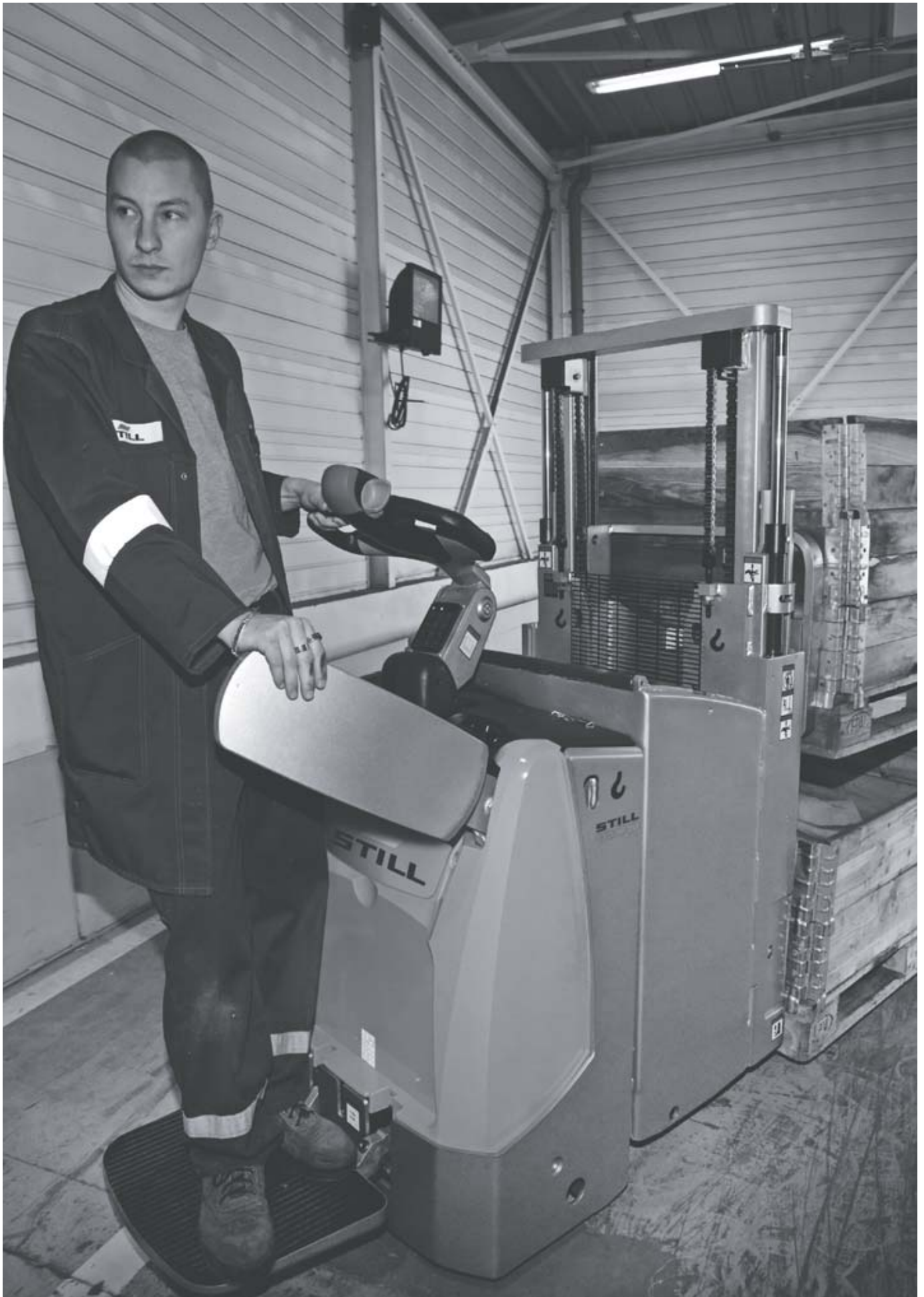


The EXD-S handles power-intensive drives up ramps thanks to its specially designed chassis contour



Precise control in every situation thanks to the electrical steering unit

EXD-SF Double Deck High Lift Pallet Truck with Driver's Stand-on Platform  
Double the load – half the time





EXD-S Double Deck High Lift Pallet Truck with Driver's Stand-on Platform  
Double the load – half the time



## EXD-SF/EXD-S Double Deck High Lift Pallet Trucks with Driver's Stand-on Platform

### Double the load – half the time

---

Also safe for pedestrian operation: optimal safety distance to the truck thanks to the unique STILL combination tiller

Fatigue-free operation and reduced strain on the operator due to the air-cushioned stand-on platform

Individual adjustment options for the driver thanks to the height-adjustable side guards



### EXD-SF

---

Are you looking for an ideal option for horizontal transport over medium and long distances with double the performance? Look no further than the EXD-SF! With the double deck functionality, you can transport two pallets up to 1000 kg each – the perfect solution for the fast handling of pressure-sensitive goods such as fruit or vegetables. Alternatively, you can transport a single pallet weighing up to 2000 kg. To save you

running out of steam even over long stretches, the EXD-SF offers a fold-out, air-sprung stand-on platform. The fold-out, height-adjustable side arms also guarantee safe driving at up to 9 km/h. However, the EXD-SF, which can be operated with one hand, has even more to offer: excellent traction with a smooth, sensitive drive and intuitive, precise electrical steering.

Maximum driving comfort thanks to the cushioned driver's stand-on platform

Ideal operator and goods protection thanks to the automatic speed reduction when driving round corners (Curve Speed Control)

Handles power-intensive drives up ramps thanks to the specially designed chassis contour



### EXD-S

---

Efficient top performance, maximum comfort and the best possible protection – the EXD-S promises all this. On the comfortable dampened driver's stand-on platform, you can also travel long distances quickly and comfortably. The chassis contour was specifically designed to handle power-intensive driving up ramps. And, to help you reach your destination both quickly and safely, the Curve Speed Control assistance system automatically adjusts the speed when driving around corners.

Whether you are transporting two pallets of up to 1000 kg each or one pallet weighing up to 2000 kg, the EXD-S allows you to always concentrate fully on the goods you are transporting. Moreover, the truck adapts to your task: use the BOOST mode for maximum performance or switch to the particularly energy-efficient ECO mode for longer operations.



## EXD-SF/EXD-S Double Deck High Lift Pallet Trucks with Driver's Stand-on Platform Extensive Equipment

---

### Power

---

- High turnover of goods thanks to a load capacity of up to 2.0 t
- Reliable and powerful thanks to the AC drive motor
- Always ready for use thanks to the high available battery capacity
- Increase the goods handling rate at the touch of a button with the varied driving programme
- The EXD-S handles power-intensive drives up ramps thanks to its specially designed chassis contour
- Sufficient power for multiple-shift operation: high battery capacity and optional lateral battery change
- Extremely high availability: the lithium-ion battery is extremely powerful and allows for quick and easy interim charging

### Precision

---

- High turnaround rate and optimal load visibility due to free view mast
- Easy, fatigue-free operation even in confined spaces thanks to the electrical steering unit of the EXD-SF and EXD-S
- Precise handling of the EXD-SF thanks to haptic differentiation between lifting and lowering knobs

### Ergonomics

---

- One-handed operation of all functions for right- and left-handed drivers with the STILL tiller
- Fatigue-free operation and reduced strain on the operator due to the EXD-SF's air-cushioned stand-on platform
- Individual adjustment options for the driver thanks to the height-adjustable side guards
- Optimum driving comfort even in pedestrian operation with the exclusive STILL combination tiller for the EXD-SF
- Optional lateral battery change for even greater availability

### Compactness

---

- Perfect in confined spaces and for loading and unloading of lorries: extremely manoeuvrable due to its low and narrow design
- The EXD-SF has a collapsible stand-on platform for operation even in narrow working areas
- Option of space-saving lateral battery change

### Safety

---

- Safety on the move, even in pedestrian mode, thanks to the unique STILL combination tiller for optimum safety distance to the truck
- Operator protected on all sides thanks to the stable stand-on platform of the EXD-S and the side guards of the EXD-SF
- Optimally positioned and dimensioned ramp switches for maximum operator safety
- Optimum operator protection and protection of goods thanks to the automatic speed reduction when driving round corners (Curve Speed Control)
- Safe and easy lateral battery change optional

### Environmental Responsibility

---

- Active environmental awareness with the emission-free operation of EXD trucks
- Environmentally friendly and energy-saving ECO driving program
- More than 95% of all materials used are recyclable
- Low operating costs: low energy consumption and long maintenance intervals

# EXD-SF/EXD-S Double Deck High Lift Pallet Trucks with Driver's Stand-on Platform Equipment Variants



		EXD-SF 20	EXD-S 20
General	Air-cushioned, individually adjustable stand-on platform for maximum operator comfort	●	—
	Cushioned stand-on platform with pre-set cushioning settings for high levels of operator comfort	○	●
	Various storage compartments and options	●	●
	Control element arrangement suitable for both left and right-handed operators	●	●
	DIN A4 writing pad	○	○
	Platform with access on the left-hand side	—	●
	Platform with access from behind	—	○
	Programmable display/service intervals	○	○
	Electrical steering unit reduces operator fatigue	●	●
	Different driving programs for adapted performance and energy efficiency in every situation	●	●
	Cold store variant	○	○
	Provision for material flow management system (MMS)	○	○
	Accessories bracket on the drive end	○	○
	Drive wheel tyres, polyurethane	●	●
Tyres	Drive wheel tyres, polyurethane, profiled	○	○
	Drive wheel tyres, solid rubber	○	—
	Drive wheel tyres, solid rubber, natural-coloured	○	—
	Drive wheel tyres, solid rubber, natural-coloured, profiled	○	—
	Load roller tyres, polyurethane, single	○	○
	Load roller tyres, polyurethane, tandem	●	●
Safety	Free view mast for optimum view of the tips of the forks	●	●
	Mast cover	●	●
	Mast cover made from transparent polycarbonate	○	—
	Automatic speed reduction when cornering	●	●
	Height-adjustable protective wing	○	—
	FleetManager: access rights, shock detection, reports	○	○
	Combi-tiller steering for high efficiency and safety levels	○	—
	PIN code access	○	○
	Foot guard for pedestrian operation	○	—
	Access authorisation STILL key	○	○
	Load backrest 600 mm	○	—
	Load backrest 800 mm	○	—
	Load backrest 1000 mm	○	—
Battery	Battery compartment for 200–250 Ah battery, for changing batteries with a crane	●	—
	Battery compartment for 300–375 Ah battery, for changing batteries with a crane	○	—
	Battery compartment for 200–250 Ah battery, for changing batteries with a lateral battery changing system	○	—
	Battery compartment for 300–375 Ah battery, for changing batteries with a lateral battery changing system	○	—
	Battery compartment for 300–465 Ah battery, for changing batteries with a lateral battery changing system	—	●
	Battery compartment for 480–620 Ah battery, for changing batteries with a lateral battery changing system	—	○
	STILL Li-Ion 82 Ah battery	○	—
	STILL Li-Ion 164 Ah battery	○	—
STILL Li-Ion 205 Ah battery	—	○	
STILL Li-Ion 410 Ah battery	—	○	

● Standard   ○ Optional   — Not available